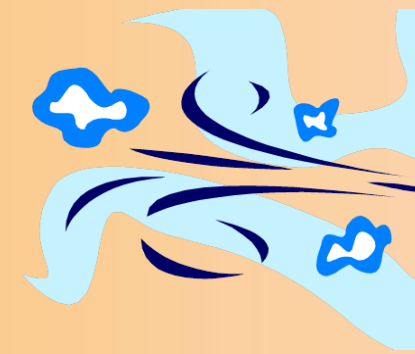




Cactus Moon Education, LLC.
Understanding Green Technologies

WIND ENERGY



How it works:

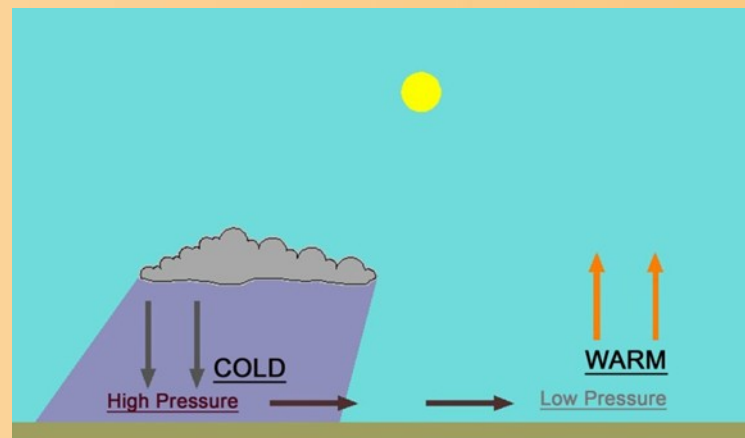
In a wind turbine, the turbine blades are connected to a shaft that turns when the wind makes the blades move. The shaft is connected to a gearbox and an electric generator that makes electricity.

A modern wind turbine has three sections, the Tower, the Nacelle, and the Rotor.

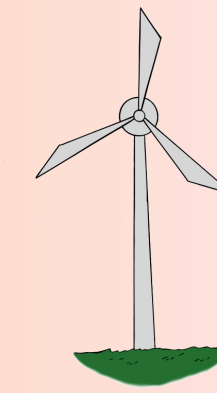
The Tower supports the Nacelle and the Rotor and holds them high in the air where the wind blows more strongly.



When the sun heats up the ground, the air close to the ground gets warm and rises. As the warm air rises, cooler air moves in to take its place. It is this moving air that makes the “wind” that we feel on our faces.

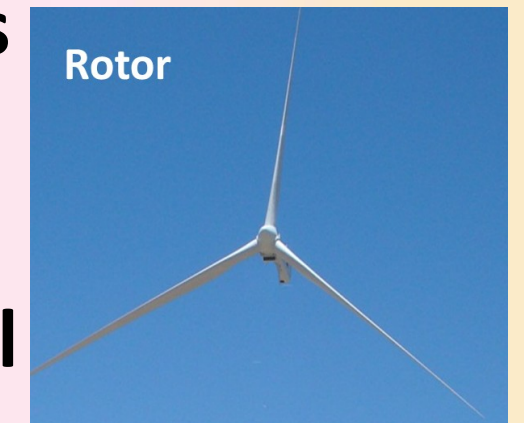


Wind has been used for hundreds of years for sail boats, windmills, and more recently to power large turbines to make electricity.



(wnd02po)

The wind turns the Rotor, which turns the mechanical gears and an



electric generator inside the Nacelle.

Wind turbines can be grouped together to make wind farms especially in areas where the wind blows strongly and continuously.

